

EW-EDMT

Data mining tool for management of ESM databases

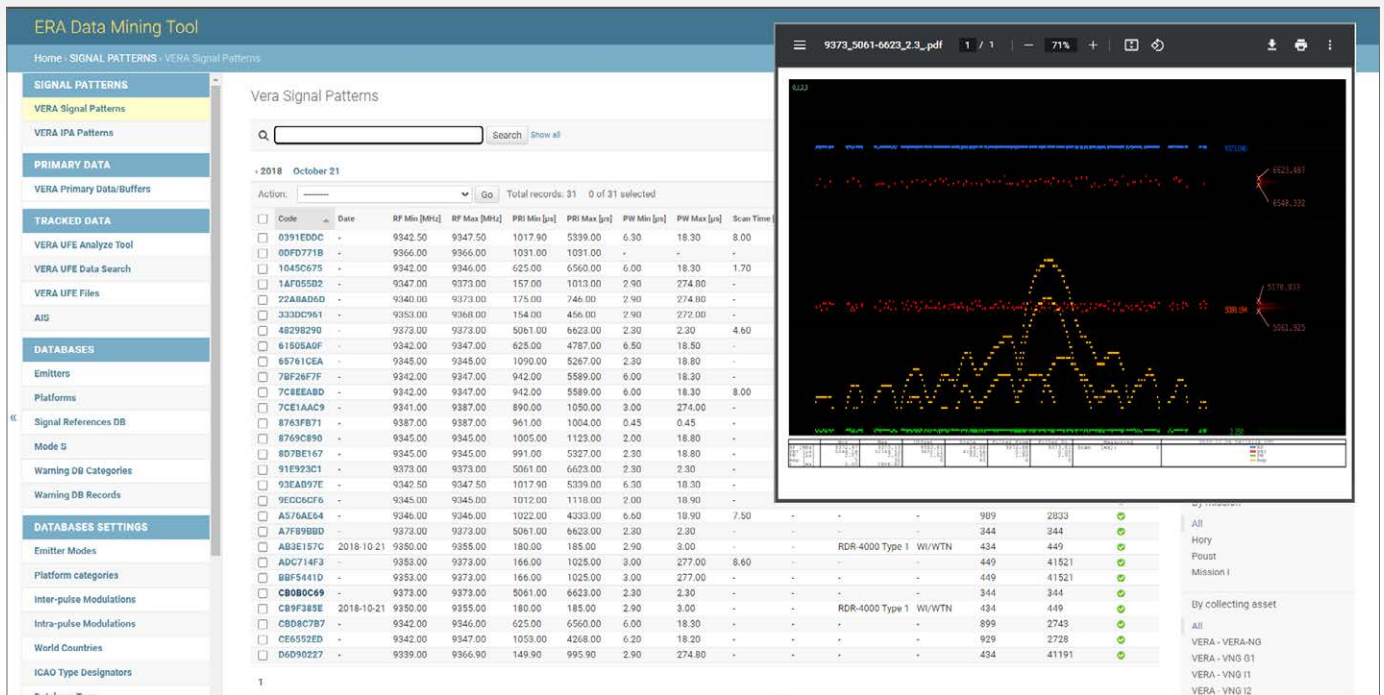
The EW-EDMT (Electronic Warfare ERA Data Mining Tool) is an application used for comprehensive management and post-mission analysis of data collected during the ESM/ELINT platforms operations. It works with all kinds of incoming data from VERA-NG and other ESM systems and it allows users to import, convert, process, filter, identify and store them.

The purpose is to extract as much information from collected data as possible and determine targets' identification such as platform, emitter and emitter mode.

The aim of post-mission analysis is to build and expand reference database (DB) to improve target identification and therefore increase automation of the platforms.

KEY FEATURES:

- ✓ Capable to integrate and evaluate data from various ESM/ELINT platforms within unified working environment
- ✓ Supports building and maintenance of National Reference Database
- ✓ Enables the customers to adhere to intelligence cycle principles
- ✓ Utilization of recorded and valuable data
- ✓ Input data comparison with the reference DB (Signal, Mode S, AIS).
- ✓ Tactical data presentation in the map
- ✓ Interconnection of corresponding data - e.g. UFE - Primary data, Signal Pattern - Primary data



The example of EW-EDMT usage: Signal Patterns section with preview of selected pattern.

FUNCTIONS:

• **IMPORT OF OPERATIONAL ESM/ELINT DATA**

During the live operation it is not possible to fully extract all available information, therefore post-mission analysis is needed. The imported data can be assigned with TAG(s) and other additional information (Collecting asset, Mission, Project, etc.) for further processing.

Supported data:

- Signal Pattern
- IPA Pattern
- Primary data
- PDW
- UFE CAT 248
- External data sources: AIS, FPL, etc.

• **DATA MANAGEMENT**

Various data is sorted in sections by its type. Associated data is interconnected. The user has available all standard tools for working with data such as:

- Sorting
- Searching
- Filtering

• **REPLAY OF RECORDS**

The application enables to replay Primary and Track (UFE) data.



• **DATA EVALUATION**

The identification can be assigned manually based on user's knowledge or automatically based on the comparison of parameters with the reference DB (Signal, Mode S, AIS).

• **DATA EXPORT**

Once the data is evaluated it can be exported from the application as increments of operational DB.

• **USER MANAGEMENT**

Access to the application is allowed only to the user with created user account. It is possible to define different access rights for each user, which defines what actions he can perform within the application.

TECHNICAL PARAMETERS:

- ✓ Possibility to extract mission relevant application data for offline field operation
- ✓ Server-Client architecture
- ✓ Web-based client
- ✓ Multi instance access
- ✓ User management and security audits