



LAPDIS

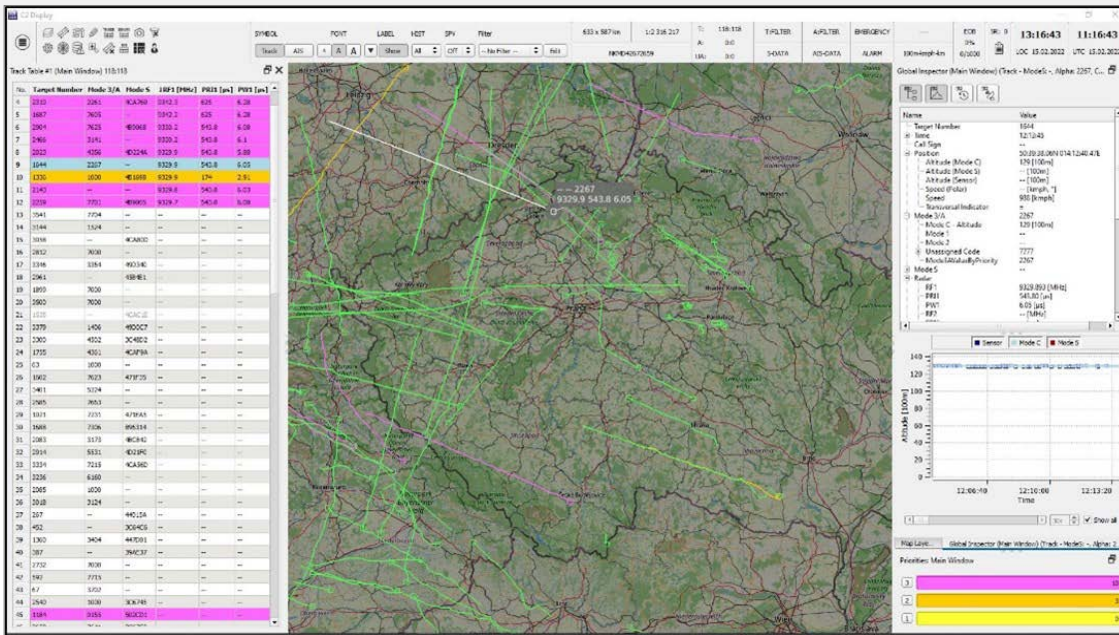
Local Area Picture Display for presentation of targets on a map background

LAPDIS (Local Area Picture Display) application is designed for the presentation of target data provided by surveillance sensors on a map background. LAPDIS is typically used by VERA-NG operator for situational awareness for activity of targets in the Area of Responsibility or by the maintenance engineer of the Multilateration Surveillance System for the checking of its performance.

Application automatically highlights priority targets based on pre-defined filters to increase operator's awareness. On this basis the operator creates spot reports and exports their history to cooperating or superordinate units. The application is also beneficial to post-mission analysis of obtained data.

KEY FEATURES:

- ✓ Targets presented in the map and track tables
- ✓ Track Inspector presenting detailed information about selected targets
- ✓ User configurable track filters
- ✓ Highlights of target priorities
- ✓ Support of ESM DB, Mode S DB, AIS DB
- ✓ Manual/semi-automatic/automatic data export
- ✓ Dedicated offline window for data replays integrated (post-mission analysis)



Main Map Window together with track table, track inspector and priorities panel.

USE CASES:

REAL-TIME DATA DISPLAY

LAPDIS application allows for displaying of real-time target data on a map background. The targets are presented together with labels, the trajectory, and the speed vector. The basic parameters of the tracked targets are presented in the target tables, the detailed ones in the Track Inspector.

TARGET PRIORITIES

The purpose of the priority assignment to a target is to draw attention to its behavior or to emphasize its importance, its specific characteristics, etc.

DATA EXPORT

Complete track history of selected target and/or Spot report.

OFFLINE WINDOW

It enables replaying of records with various speeds to simulate “real” operations or upload the whole record to scrutinize what targets have been intercepted in the given time period.

ESM DB, MODE S DB, AIS DB

LAPDIS enables the presentation of the results of VERA-NG NCTI (Non-Cooperative Target Identification) process together with additional information from Modes S DB and AIS DB to increase the situational awareness of the operator within AoR.

WARNING DB

The alarm is initiated for the targets/AIS objects, the parameters of which are listed in the user-defined warning database. Signaling can be visual and/or audible.

FPL

LAPDIS enables the presentation of the FPL information and correlates them with track targets. FPL is a source of additional information for target identification.

BENEFITS:

- ✓ Implemented Warning DB – to highlight hostile targets
- ✓ Possibility to select from various predefined map backgrounds
- ✓ Processing of various input formats
- ✓ Automatic track history export
- ✓ Spot report creation for selected targets
- ✓ User-friendly graphical interface
- ✓ Online and offline configuration

TECHNICAL PARAMETERS:

- ✓ The input data formats are various ASTERIX, UFE and AWCIES categories or AIS (AIVDM/ AIVDO)
- ✓ Up to 4 independent map windows available
- ✓ NATO target symbology according to APP-6
- ✓ Target’s labels are configurable
- ✓ FPL’s correlation is done based on Mode 3/A or callsign

ERA a.s.
Průmyslová 462
530 03 Pardubice
Czech Republic

SALES DEPARTMENT
+420 467 004 387
sales@era.aero

www.era.aero